

Economical Thermal Transfer Printer



Featuring:

State-of-the-art, high-resolution print head technology.

Low cost of ownership, and rugged, proven hardware and software designs.

Self contained, (two component) space saving design, printer and power supply.

Large 600 meter ribbon capacity with clutchless ribbon drive.

Bi-directional ribbon drive for the most accurate and economical use of ribbon.

Ideal for most packaging applications.

Specifications

Dimensions:

| | |
|--------|---------------|
| Height | 8.08" (205mm) |
| Width | 6.30" (160mm) |
| Depth | 7.95" (202mm) |
| Weight | 15 lbs, 7 kg |

Electrical Standard

110/220/240 V 50/60 Hz 250 Watts

CE Certified

Air Supply

30-80 psi

Print Area

Intermittent Motion:

| | |
|--------|--------------|
| Width | 2.08" (53mm) |
| Length | 1.18" (30mm) |

Continuous Motion:

| | |
|--------|--------------|
| Width | 2.08" (53mm) |
| Length | 1.97" (50mm) |

Print Dot Density

12 dots/mm (300 dpi) horizontally and vertically

Print Speed

Up to 400 mm/sec

Ribbon

Up to 600 meter (1970' roll)

Memory

Printer: 200 kb

JDS (Jaguar Design Software) PCMCIA Card—1 Mb card included

Modes of Operation

Easy to read backlit LCD handset

Direct connection to PC

Outputs

Machine on error (failsafe) - image ready, cassette open, power on, etc.

Head up/down

Inhibit (printing or ready to print.)

Inputs

Print Signal

Character Sizes

6-72 pt. high (width scaleable)

Functions

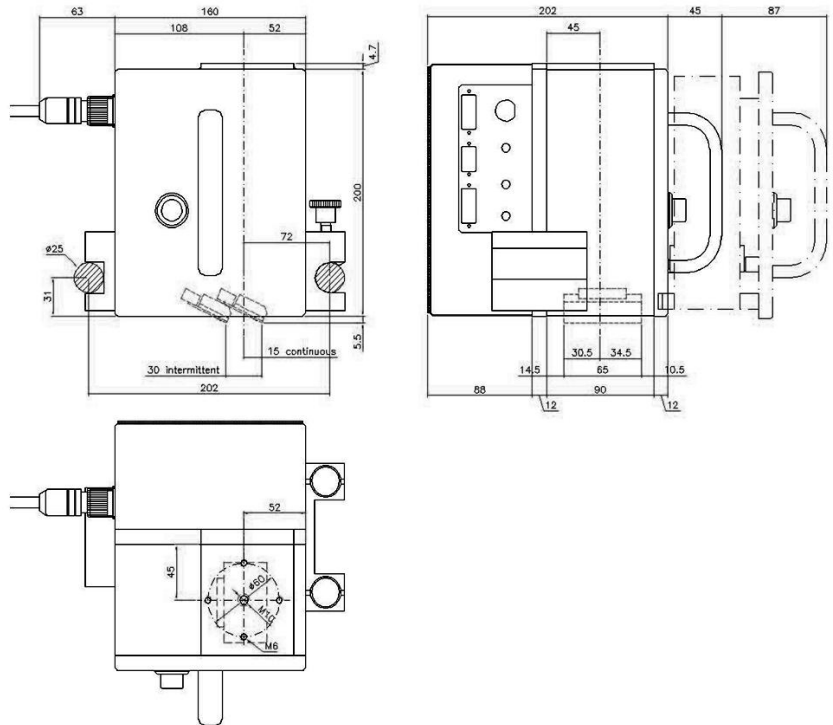
Normal and obligatory text

Date/real time clock

Graphics images - BMP format

0, 90, 180, 270 rotation

Extended date codes



Text

Four (4) resident fonts = (scaleable in width)

Bar Codes

RSS14, RSS14 truncated, RSS14 limited, RSS14 stacked, RSS14 stacked omni-directional, EAN-8, EAN-13, EAN-128, CODE 128, CODE 39, 1-2 of 5, Code 93, DUN 14, ISBN, UPC-A

Communications

RS-232 (PC)

Multi-language (8) support standard

Options

Remote image loading with memory card



PALCO

Industrial Marking and Labeling, Inc.

www.palcosys.com

11490 South 153rd Street • Omaha, NE 68138

Phone: (402) 556-7000 • Toll Free: (800) 255-7252 • FAX (402-556-6622)